

PLUG

	G1	SEE SHT. 1
	G	SEE SHT. 1
	F1	SEE SHT. 1
	E	SEE SHT. 1
	B	SEE SHT. 1
	A	SEE SHT. 1
	I	SEE SHT. 1
LTR.	REVISIONS	LTR. REVISIONS

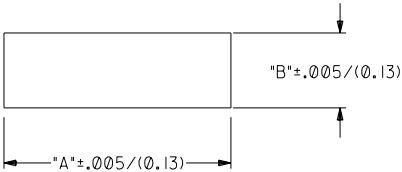
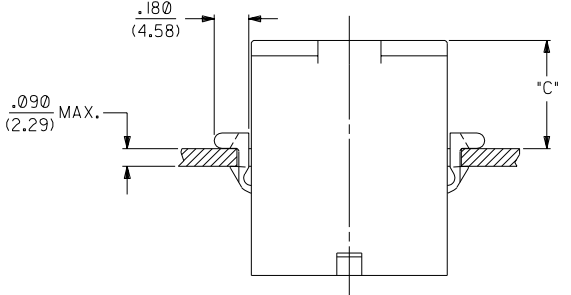
DIMENSIONS SHOWN (METRIC) INCH	
UNLESS OTHERWISE SPECIFIED TOLERANCES: ANGULAR ± .007°	
3 PLACE	± .007 ---
2 PLACE	± .010 ± 0.18
1 PLACE	--- ± 0.25
DRAFT WHERE APPLICABLE MUST REMAIN WITHIN DIMENSIONS	
DRWG. BY: GEP	CHK'D. BY: RW
APP'D. BY: RAS	SCALE: 2 : 1

▽ = 0	▼ = 0	REVISE ONLY ON CAD SYSTEM
TITLE: .125/(3.17) HOUSING, PLUG AND RECEPTACLE, 3 CKT., .330/(8.38) CTRS.		
MOLEX INCORPORATED	SHEET NO. 2	DATE 5/6/88
PART NO. SD-42179-3*		
SEE CHART		
FILE NAME: S421793X2.DGN	THIS DRAWING CONTAINS INFORMATION THAT IS PROPRIETARY TO MOLEX INC. AND SHOULD NOT BE USED WITHOUT WRITTEN PERMISSION.	DIV. CP

PLUG		RECEPTACLE	
PART NO.	ENG. NO.	PART NO.	ENG. NO.
03-12-2036	42179-3PI	03-12-1036	42179-3RI
03-12-2035	42179-3P	50-29-1608	42179-3RI-B

LEGEND:
42179-3***-*

CIRCUIT SIZE: _____
HOUSING TYPE: _____
P = PLUG
R = RECEPTACLE
MOUNTING EAR OPTION: _____
BLANK = WITH PREBENT EARS AND RIBS, PLUG ONLY
I = WITHOUT EARS
COLOR: _____
BLANK = TRANSLUCENT NATURAL COLOR
AM=AMBER BK=BLACK BU=BLUE
BN=BROWN GY=GRAY GN=GREEN
OR=ORANGE RD=RED YW=YELLOW
MATERIAL: _____
BLANK = MATERIAL CODE A.
B = MATERIAL CODE B.



RECOMMENDED HOLE CUTOUT

HOUSING	DIM. "A"	DIM. "B"	DIM. "C"
PLUG	1.181/(30.00)	.440/(11.18)	.57/(14.5)

- NOTES:**
- PART ACCEPTS A MAXIMUM .250/(6.35) INSULATION DIA.
 - FOR USE WITH ALL MOLEX .125/(3.17) DIAMETER SERIES TERMINAL EXCEPT THE 1219/1220 SERIES.
 - MATERIAL CODES:-
A- NYLON 6/6, U.L. 94V-2.
B- NYLON 6/6, U.L. 94V-0.

G	SEE SHEET I
FI	SEE SHEET I
F	SEE SHEET I
D	SEE SHEET I
B	SEE SHT. I
A	SEE SHT. I
GI	SEE SHEET I
I	SEE SHT. I
LTR.	REVISIONS

DRWG. BY	GEP	CHK'D. BY	RW
APP'D. BY	RAS	SCALE	2 : 1

DIMENSIONS SHOWN (METRIC) INCH
UNLESS OTHERWISE SPECIFIED
TOLERANCES: ANGULAR ± .5°

3 PLACE ± .007	---
2 PLACE ± .010	± 0.18
1 PLACE ---	± 0.25

DRAFT WHERE APPLICABLE MUST REMAIN WITHIN DIMENSIONS

REVISIONS ONLY ON CAD SYSTEM

TITLE: .125/(3.17) HOUSINGS, PLUG AND RECEPTACLE, 3 CKT., .330/(8.38) CTRS.

MOLEX INCORPORATED
LITSE, ILL. 60532 U.S.A.

SHEET NO. 3 DATE 4/20/88

PART NO. SD-42179-3*
DRWG. NO. CP C

FILE NAME: S421793X3 DGN
THIS DRAWING CONTAINS INFORMATION THAT IS PROPRIETARY TO MOLEX INC. AND SHOULD NOT BE USED WITHOUT WRITTEN PERMISSION